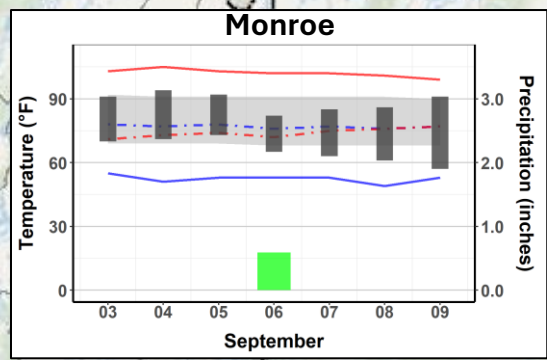
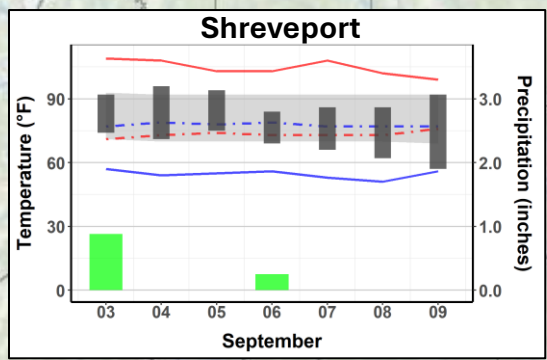




# LOUISIANA WEEKLY CLIMATE SUMMARY

Volume 1, Issue 36

September 03 – September 09, 2025



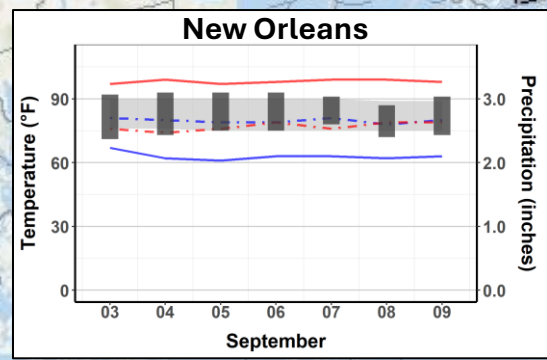
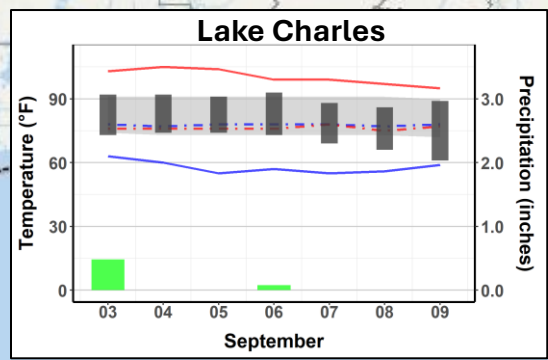
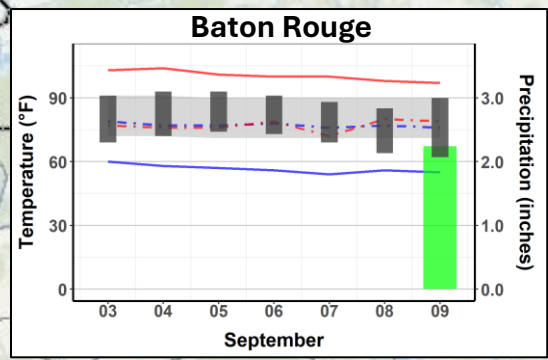
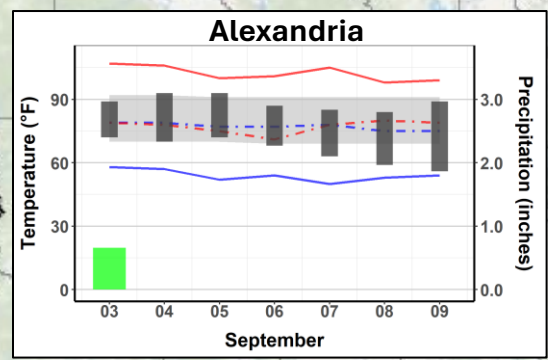
**Daily Ranges**

- Max/ Min Temps
- Max/ Min Normal

**Daily Extremes**

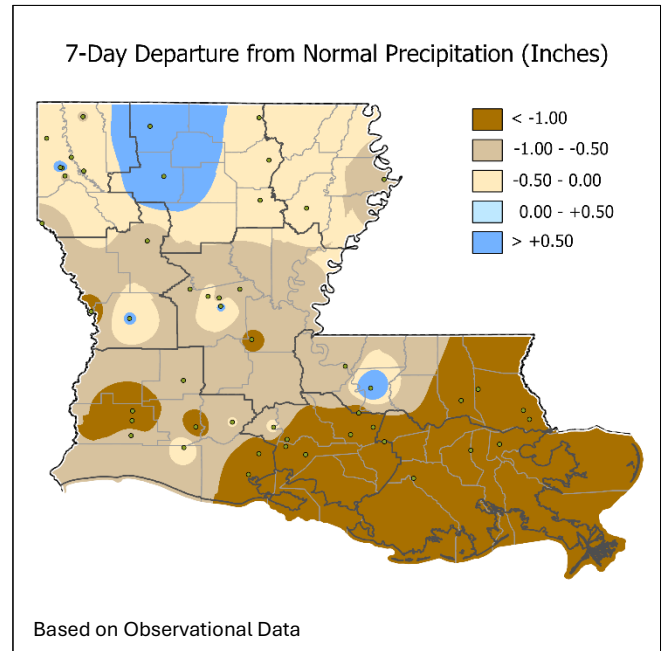
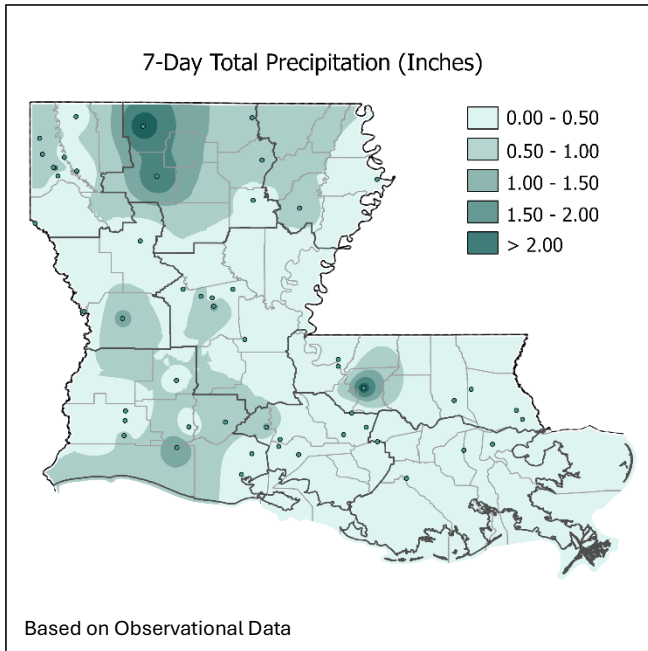
- Record High Max
- Record High Min
- Record Low Max
- Record Low Min

**Rainfall**

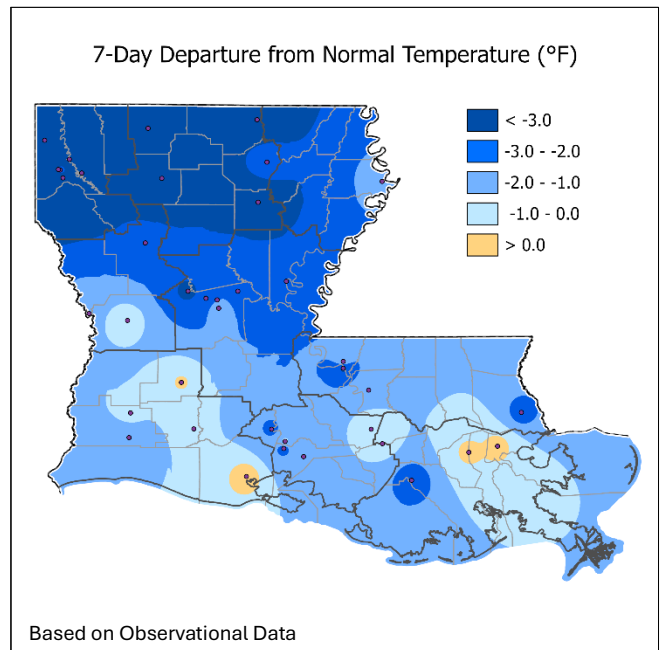
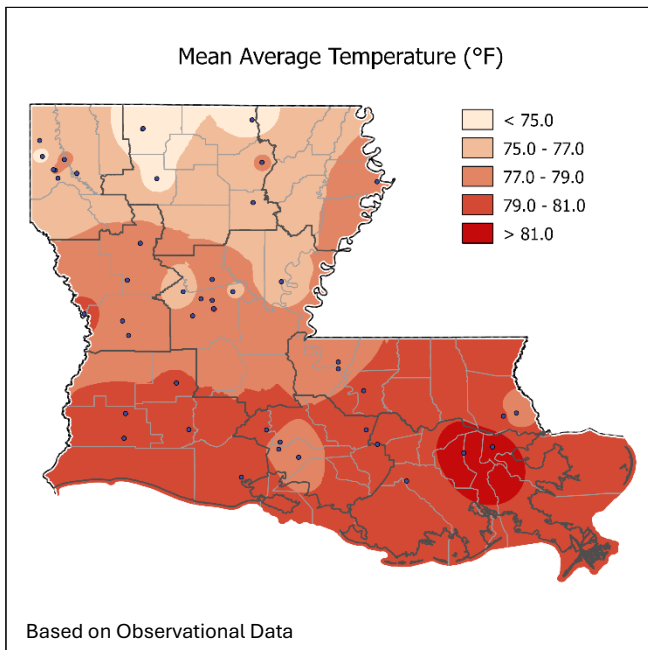


\* PROVISIONAL DATA

## 7-Day Accumulated Rainfall & Average Temperatures: Sept 03 – Sept 09, 2025



- outside of precipitation received as a result of a front that eventually cleared Louisiana on 9/6, conditions were dry, particularly across the southern portion of the state
- of the reporting stations in our analysis (pgs. 4-7), 50 stations received ZERO precipitation during the 7-day period



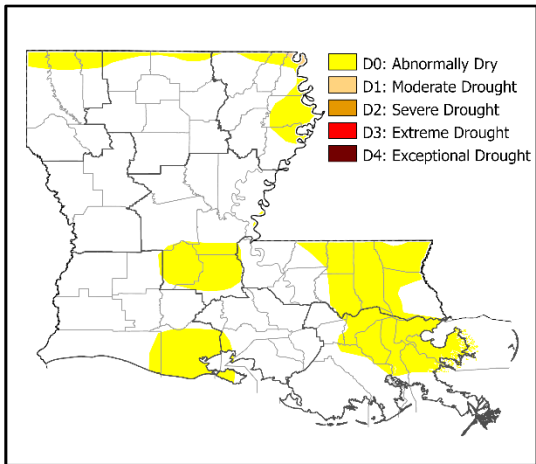
- a frontal passage on 9/6 provided the first real taste of fall across the Bayou state with much lower humidities and temperatures following
- several stations in our analysis recorded morning lows in the 50s on 9/8 & 9/9 (including 51°F at Homer 1 N on 9/9), the first such occurrence since mid-May

### Divisional and State Summary: Sept 03– Sept 09, 2025

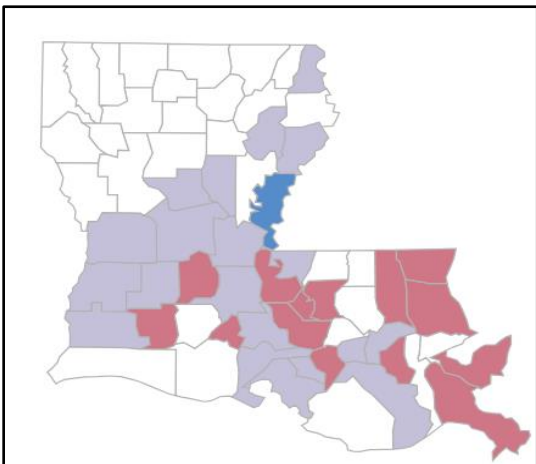
Divisions	Avg T-Max	Avg T-Min	T-Avg (°F)	T-Avg DFN	Highest T-Max	Lowest T-Min	HDD	HDD %-N	CDD	CDD %-N	Total P (in.)	P-DFN (in.)	1-Day P-Max	Rain Days
Northwest	86.9	65.7	76.3	-3.6	96	52	0	0	81	76	0.35	-0.34	0.88	3
North Central	86.3	63.7	75.0	-3.8	95	51	0	0	72	75	1.22	+0.33	2.27	3
Northeast	89.0	67.3	78.1	-1.6	93	59	0	0	95	92	0.32	-0.55	0.57	2
West Central	90.5	66.9	78.7	-1.4	96	54	0	0	97	92	0.42	-0.57	1.12	2
Central	88.1	66.1	77.1	-2.4	94	55	0	0	88	86	0.34	-0.75	1.45	2
East Central	89.6	67.6	78.6	-2.0	94	57	0	0	97	89	0.10	-1.21	2.24	2
Southwest	89.6	69.8	79.7	-0.5	94	53	0	0	105	98	0.48	-1.10	2.11	3
South Central	89.8	68.9	79.3	-1.4	93	59	0	0	102	93	0.33	-1.08	1.39	2
Southeast	90.4	73.1	81.7	-0.8	93	64	0	0	119	97	0.00	-1.51	0.05	1
<b>STATE</b>	<b>88.9</b>	<b>67.7</b>	<b>78.3</b>	<b>-1.9</b>	<b>96</b>	<b>51</b>	<b>0</b>	<b>0</b>	<b>95</b>	<b>89</b>	<b>0.40</b>	<b>-0.76</b>	<b>2.27</b>	<b>3</b>

\* T - Temperature (°F) DFN - Departure from Normal P - Precipitation (in.) "-" indicates data not available "M" - missing observation(s)

#### U.S. Drought Monitor as of Sept 09, 2025



#### LSU AgCenter Field Condition Reports



#### USDM: Issued September 11, 2025

##### - includes data thru September 09

The Louisiana Drought Team (LDT), in coordination with the national USDM authors, agreed to decrease the area of D0 “abnormally dry” conditions along the La/AR border but increase the area of D0 across south-central and southeastern Louisiana. With the changes the statewide coverage of D0 increased from 23.27% to 29.33%, the highest since 11/19/24.

Conditions were dry for most of the state during the 7-day monitoring period. Much of southeastern Louisiana received no precipitation. After the frontal passage on 9/6, humidities decreased which exacerbated the drying. Dryness signals were present across several different parameters, including soil moisture and reported field conditions (left, red); thus, D0 coverage increased.

According to the National Agricultural Statistics Service, 13% of pasture and range conditions are poor or very poor, up from 6% on 8/10; 41% of topsoil moisture conditions are short or very short, up from 25% on 8/10; and 19% of subsoil moisture condition is short or very short, down from 22% on 8/10.

“Precipitation and temperature data are primarily retrieved through the ACIS QueryBuilder ([rcc-acis.org](http://rcc-acis.org)) and the cliMATE platform (MRCC Application Tools Environment), both of which are maintained by the NOAA Regional Climate Centers (RCCs). Drought data are sourced from the U.S. Drought Monitor ([unl.edu](http://unl.edu)).”

## Station Summaries by Division: Sept 03 – Sept 09, 2025

Includes NWS Cooperative and CoCoRaHS Stations

<b>Northwest Division</b>															
Stations	Avg T-Max	Avg T-Min	T-Avg (°F)	T-Avg DFN	Highest T-Max	Lowest T-Min	HDD	HDD %-N	CDD	CDD %-N	Total P (in.)	P- DFN (in.)	1-Day P-Max	P-Max Date	Rain Days
<i>Blanchard</i>	84.7	62.9	73.8	-	91	52	0	-	64	-	0.49	-	0.42	9/6	2
<i>Bossier City 4.0 S</i>	-	-	-	-	-	-	-	-	-	-	0.07	-	0.07	9/6	1
<i>Converse 7.8 NNW</i>	-	-	-	-	-	-	-	-	-	-	0.00	-	-	-	0
<i>Coushatta 4.3 ENE</i>	-	-	-	-	-	-	-	-	-	-	0.11	-	0.11	9/6	1
<i>Logansport</i>	-	-	-	-	-	-	-	-	-	-	0.00	-0.84	-	-	0
<i>Mooringsport 1 N</i>	84.6	66.4	75.5	-4.3	91	57	0	0	76	74	0.53	-0.33	0.46	9/4	3
<i>Plain Dealing</i>	-	-	-	-	-	-	-	-	-	-	0.37	-0.53	0.36	9/6	2
<i>Red River Res Sta</i>	87.6	65.6	76.6	-3.4	93	54	0	0	82	78	0.24	-0.44	0.22	9/3	2
<i>Shreveport DTN AP</i>	88.4	66.9	77.6	-4.1	95	57	0	0	91	78	0.26	-0.47	0.15	9/6	2
<i>Shreveport SHV AP</i>	90.0	67.7	78.9	-2.2	96	57	0	0	99	88	1.13	+0.43	0.88	9/3	2
<i>Shreveport WFO</i>	85.4	66.1	75.8	-3.7	92	58	0	0	77	76	0.85	+0.02	0.54	9/3	2
<i>SHV Southern Hills</i>	87.6	64.0	75.8	-3.8	94	53	0	0	77	75	0.02	-0.76	0.01	9/4	2
<i>Stonewall 5.3 NE</i>	-	-	-	-	-	-	-	-	-	-	0.05	-	0.05	9/4	1
<i>Taylorstown</i>	-	-	-	-	-	-	-	-	-	-	0.84	-	0.80	9/3	2
<b>Division</b>	<b>86.9</b>	<b>65.7</b>	<b>76.3</b>	<b>-3.6</b>	<b>96</b>	<b>52</b>	<b>0</b>	<b>0</b>	<b>81</b>	<b>76</b>	<b>0.35</b>	<b>-0.34</b>	<b>0.88</b>		<b>3</b>
<b>North Central Division</b>															
<i>Bienville 3 NE</i>	86.3	63.0	74.6	-4.9	91	54	0	0	70	69	1.88	+1.05	1.64	9/6	2
<i>Calhoun 4.3 SSE</i>	-	-	-	-	-	-	-	-	-	-	1.70	+0.74	0.84	9/6	3
<i>Carlton 1.7 E</i>	-	-	-	-	-	-	-	-	-	-	1.08	-	0.71	9/6	3
<i>Columbia Lock</i>	85.3	66.3	75.8	-3.9	91	58	0	0	78	76	0.36	-0.49	0.25	9/7	2
<i>Homer 1 N</i>	84.7	62.4	73.6	-3.9	92	51	0	0	61	69	2.31	+1.53	2.27	9/6	3
<i>Jonesboro 3.8 ESE</i>	-	-	-	-	-	-	-	-	-	-	1.38	-	M	M	M
<i>Monroe MLU AP</i>	88.7	65.7	77.2	-2.5	94	57	0	0	88	85	0.59	-0.21	0.59	9/6	1
<i>Monroe 26 N</i>	86.7	61.1	73.9	-3.6	95	53	0	0	64	73	0.89	-0.15	0.89	9/6	1
<i>Quitman 2.5 E</i>	-	-	-	-	-	-	-	-	-	-	1.51	-	1.11	9/6	2
<i>Rocky Branch 1.3 W</i>	-	-	-	-	-	-	-	-	-	-	0.91	-	0.60	9/6	3
<i>Ruston 5.4 ENE</i>	-	-	-	-	-	-	-	-	-	-	1.03	-	1.03	9/6	1
<i>Ruston 5.5 NNW</i>	-	-	-	-	-	-	-	-	-	-	1.30	+0.31	1.30	9/6	1
<i>Sikes 1.0 SW</i>	-	-	-	-	-	-	-	-	-	-	0.89	-	0.76	9/7	3
<b>Division</b>	<b>86.3</b>	<b>63.7</b>	<b>75.0</b>	<b>-3.8</b>	<b>95</b>	<b>51</b>	<b>0</b>	<b>0</b>	<b>72</b>	<b>75</b>	<b>1.22</b>	<b>+0.33</b>	<b>2.27</b>		<b>3</b>
<b>Northeast Division</b>															
<i>FSA-St. Joseph 0.5 NNW</i>	-	-	-	-	-	-	-	-	-	-	0.45	-	M	M	M
<i>FSA-Tallulah 1.7 SSE</i>	-	-	-	-	-	-	-	-	-	-	0.46	-	M	M	M
<i>Oak Grove 1.9 E</i>	-	-	-	-	-	-	-	-	-	-	0.22	-	0.20	9/6	2
<i>Pioneer 0.3 WSW</i>	-	-	-	-	-	-	-	-	-	-	0.18	-	0.16	9/6	2
<i>Tallulah TVR AP</i>	89.0	67.3	78.1	-1.6	93	59	0	0	95	92	0.06	-0.74	0.05	9/6	2
<i>Winnsboro 5 SSE</i>	M	M	M	M	M	M	M	M	M	M	0.57	-0.37	0.57	9/6	1
<b>Division</b>	<b>89.0</b>	<b>67.3</b>	<b>78.1</b>	<b>-1.6</b>	<b>93</b>	<b>59</b>	<b>0</b>	<b>0</b>	<b>95</b>	<b>92</b>	<b>0.32</b>	<b>-0.55</b>	<b>0.57</b>		<b>2</b>

\* T - Temperature (°F) DFN - Departure from Normal P - Precipitation (in.) "-" indicates data not available "M" - missing observation(s)

### Station Summaries by Division: Sept 03 – Sept 09, 2025

Includes NWS Cooperative and CoCoRaHS Stations

<b>West Central Division</b>															
<i>Stations</i>	Avg T-Max	Avg T-Min	T-Avg (°F)	T-Avg DFN	Highest T-Max	Lowest T-Min	HDD	HDD %-N	CDD	CDD %-N	Total P (in.)	P- DFN (in.)	1-Day P-Max	P-Max Date	Rain Days
<i>Anacoco 3.0 SW</i>	-	-	-	-	-	-	-	-	-	-	0.22	-	0.22	9/7	1
<i>Campiti 5.7 ENE</i>	-	-	-	-	-	-	-	-	-	-	1.06	-	1.06	9/6	1
<i>Hornbeck 2.3 NE</i>	-	-	-	-	-	-	-	-	-	-	1.19	-	1.12	9/6	2
<i>Leesville</i>	91.9	65.1	78.5	-0.5	96	54	0	0	96	98	1.11	+0.07	1.06	9/4	2
<i>Leesville 7.1 SSW</i>	-	-	-	-	-	-	-	-	-	-	0.00	-	-	-	0
<i>Natchitoches #2</i>	89.4	66.6	78.0	-2.5	96	57	0	0	92	84	0.05	-0.79	0.05	9/7	1
<i>Noble 1.8 ESE</i>	-	-	-	-	-	-	-	-	-	-	0.43	-	0.43	9/7	1
<i>Pitkin 6.6 WNW</i>	-	-	-	-	-	-	-	-	-	-	0.04	-	0.04	9/4	1
<i>Pleasant Hill 10.2 SE</i>	-	-	-	-	-	-	-	-	-	-	0.12	-0.74	0.12	9/4	1
<i>Toledo Bend Lake</i>	90.3	68.9	79.6	-1.1	92	62	0	0	104	95	0.00	-1.22	-	-	0
<b>Division</b>	<b>90.5</b>	<b>66.9</b>	<b>78.7</b>	<b>-1.4</b>	<b>96</b>	<b>54</b>	<b>0</b>	<b>0</b>	<b>97</b>	<b>92</b>	<b>0.42</b>	<b>-0.57</b>	<b>1.12</b>		<b>2</b>
<b>Central Division</b>															
<i>Alexandria</i>	90.3	66.4	78.4	-2.0	94	60	0	0	96	89	0.24	-0.76	0.24	9/7	1
<i>Alexandria 5 SSE</i>	90.9	67.7	79.3	-1.1	94	59	0	0	102	94	1.20	+0.21	0.70	9/3	2
<i>Alexandria ESF AP</i>	88.4	64.9	76.6	-2.8	93	55	0	0	84	83	0.00	-0.93	-	-	0
<i>Boyce 3 WNW</i>	84.7	64.9	74.8	-3.3	91	56	0	0	70	77	0.00	-0.99	-	-	0
<i>Bunkie</i>	M	M	M	M	M	M	M	M	M	M	0.01	-1.12	0.01	9/3	1
<i>Colfax 7.2 NW</i>	-	-	-	-	-	-	-	-	-	-	1.61	-	1.45	9/4	2
<i>FSA-Ferriday 1.0 WSW</i>	-	-	-	-	-	-	-	-	-	-	0.09	-	0.09	9/3	1
<i>FSA-Opelousas 1.0 ESE</i>	-	-	-	-	-	-	-	-	-	-	0.10	-	0.05	9/6	1
<i>Grand Coteau 2.7 E</i>	-	-	-	-	-	-	-	-	-	-	0.00	-1.49	-	-	0
<i>Hessmer 2.5 WSW</i>	-	-	-	-	-	-	-	-	-	-	0.17	-	0.14	9/3	2
<i>Jonesville Locks</i>	86.0	66.5	76.3	-2.8	91	59	M	M	M	M	M	M	M	M	1
<i>Pineville 0.4 NNW</i>	-	-	-	-	-	-	-	-	-	-	0.28	-	0.27	9/3	2
<i>Trout 4.4 WSW</i>	-	-	-	-	-	-	-	-	-	-	0.37	-	0.35	9/4	2
<b>Division</b>	<b>88.1</b>	<b>66.1</b>	<b>77.1</b>	<b>-2.4</b>	<b>94</b>	<b>55</b>	<b>0</b>	<b>0</b>	<b>88</b>	<b>86</b>	<b>0.34</b>	<b>-0.75</b>	<b>1.45</b>		<b>2</b>
<b>East Central Division</b>															
<i>Baker</i>	-	-	-	-	-	-	-	-	-	-	0.00	-1.21	-	-	0
<i>Baton Rouge Metro AP</i>	90.1	69.0	79.6	-1.2	93	62	0	0	104	94	2.24	+1.08	2.24	9/9	1
<i>Baton Rouge Sherwood</i>	-	-	-	-	-	-	-	-	-	-	0.00	-1.28	-	-	0
<i>Baton Rouge 0.5 ESE</i>	-	-	-	-	-	-	-	-	-	-	0.00	-	-	-	0
<i>Baton Rouge 3.5 E</i>	-	-	-	-	-	-	-	-	-	-	0.00	-	-	-	0
<i>Baton Rouge 6.2 SSE</i>	-	-	-	-	-	-	-	-	-	-	0.00	-	-	-	0
<i>Central 2.2 SE</i>	-	-	-	-	-	-	-	-	-	-	0.00	-1.29	-	-	0
<i>Clinton 0.2 NNW</i>	-	-	-	-	-	-	-	-	-	-	0.00	-	-	-	0
<i>Covington 8 WNW</i>	M	M	M	M	M	M	M	M	M	M	0.00	-1.03	-	-	0
<i>Denham Springs 6.8 N</i>	-	-	-	-	-	-	-	-	-	-	0.00	-1.29	-	-	0
<i>FSA-Amite City 0.8 SW</i>	-	-	-	-	-	-	-	-	-	-	0.01	-	0.01	9/3	1

\* T - Temperature (°F) DFN - Departure from Normal P - Precipitation (in.) "-" indicates data not available "M" - missing observation(s)

### Station Summaries by Division: Sept 03 – Sept 09, 2025

Includes NWS Cooperative and CoCoRaHS Stations

<b>East Central Division (cont.)</b>															
Stations	Avg T-Max	Avg T-Min	T-Avg (°F)	T-Avg DFN	Highest T-Max	Lowest T-Min	HDD	HDD %-N	CDD	CDD %-N	Total P (in.)	P- DFN (in.)	1-Day P-Max	P-Max Date	Rain Days
<i>FSA-Franklinton 0.6 WSW</i>	-	-	-	-	-	-	-	-	-	-	0.00	-	-	-	0
<i>Jackson 3.6 NNE</i>	-	-	-	-	-	-	-	-	-	-	0.02	-	0.02	9/6	1
<i>Lacombe 1.4 N</i>	-	-	-	-	-	-	-	-	-	-	0.00	-1.67	-	-	0
<i>Livingston</i>	-	-	-	-	-	-	-	-	-	-	0.00	-1.39	-	-	0
<i>LSU Campus</i>	-	-	-	-	-	-	-	-	-	-	0.00	-1.51	-	-	0
<i>New Roads 5 NE</i>	88.6	68.4	78.5	-3.3	93	62	0	0	95	81	0.21	-0.83	0.18	9/5	2
<i>Ponchatoula 4 E</i>	-	-	-	-	-	-	-	-	-	-	0.00	-1.24	-	-	0
<i>Ponchatoula 5.3 W</i>	-	-	-	-	-	-	-	-	-	-	0.00	-	-	-	0
<i>Port Allen</i>	-	-	-	-	-	-	-	-	-	-	0.00	-1.17	-	-	0
<i>Slidell</i>	M	M	M	M	M	M	M	M	M	M	0.02	-1.43	0.02	9/7	1
<i>Slidell ASD AP</i>	89.0	66.7	77.9	-2.3	91	62	0	0	92	87	0.00	-1.15	-	-	0
<i>Slidell 4.4 E</i>	-	-	-	-	-	-	-	-	-	-	0.00	-1.74	-	-	0
<i>St. Francisville 1 NE</i>	90.6	66.3	78.4	-1.2	94	57	0	0	95	93	0.00	-	-	-	0
<i>Wakefield 0.2 E</i>	-	-	-	-	-	-	-	-	-	-	0.00	-	-	-	0
<b>Division</b>	<b>89.6</b>	<b>67.6</b>	<b>78.6</b>	<b>-2.0</b>	<b>94</b>	<b>57</b>	<b>0</b>	<b>0</b>	<b>97</b>	<b>89</b>	<b>0.10</b>	<b>-1.21</b>	<b>2.24</b>		<b>2</b>
<b>Southwest Division</b>															
<i>Abbeville</i>	-	-	-	-	-	-	-	-	-	-	0.06	-1.40	0.06	9/4	1
<i>Branch 0.4 SSW</i>	-	-	-	-	-	-	-	-	-	-	0.67	-	0.67	9/4	1
<i>Church Point 0.7 WSW</i>	-	-	-	-	-	-	-	-	-	-	0.00	-	-	-	0
<i>Crowley 2 NE</i>	-	-	-	-	-	-	-	-	-	-	0.90	-0.45	0.90	9/4	1
<i>FSA-De Ridder 0.9 E</i>	-	-	-	-	-	-	-	-	-	-	0.00	-	-	-	0
<i>Jennings</i>	89.3	69.7	79.5	-0.8	92	60	0	0	103	96	0.27	-1.29	0.25	9/4	2
<i>Lake Arthur 7 SW</i>	M	M	M	M	M	M	M	M	M	M	1.52	-0.08	1.52	9/4	1
<i>Lake Charles 2 N</i>	-	-	-	-	-	-	-	-	-	-	0.07	-1.26	0.05	9/4	2
<i>Lake Charles Port</i>	-	-	-	-	-	-	-	-	-	-	0.01	-1.33	0.01	9/4	1
<i>Lake Charles LCH AP</i>	90.1	70.0	80.1	-1.9	93	61	0	0	107	90	0.56	-0.79	0.48	9/3	2
<i>Lake Charles 4.8 SSE</i>	-	-	-	-	-	-	-	-	-	-	0.63	-	0.61	9/4	2
<i>Leland Boman Lock</i>	88.7	72.0	80.4	+0.7	92	64	0	0	110	107	0.49	-1.20	0.38	9/3	3
<i>Moss Bluff</i>	-	-	-	-	-	-	-	-	-	-	0.28	-1.11	0.15	9/7	2
<i>Moss Bluff 2 NNW</i>	90.7	68.0	79.4	-0.6	94	53	0	0	102	97	0.50	-1.40	0.44	9/6	2
<i>Oberlin Fire Tower</i>	89.1	69.4	79.3	+0.1	92	59	0	0	102	103	0.46	-0.83	0.41	9/3	2
<i>Ragley 5.0 SE</i>	-	-	-	-	-	-	-	-	-	-	0.00	-2.36	-	-	0
<i>Rayne 1.0 W</i>	-	-	-	-	-	-	-	-	-	-	2.12	-	2.11	9/4	2
<i>Sulphur 2.2 E</i>	-	-	-	-	-	-	-	-	-	-	0.13	-1.83	0.13	9/4	1
<b>Division</b>	<b>89.6</b>	<b>69.8</b>	<b>79.7</b>	<b>-0.5</b>	<b>94</b>	<b>53</b>	<b>0</b>	<b>0</b>	<b>105</b>	<b>98</b>	<b>0.48</b>	<b>-1.10</b>	<b>2.11</b>		<b>3</b>

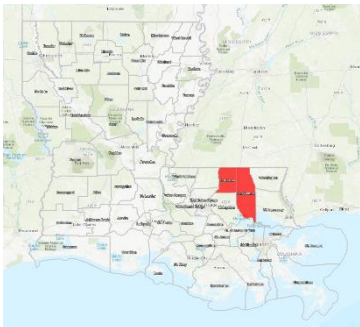
\* T - Temperature (°F)    DFN - Departure from Normal    P - Precipitation (in.)    "-" indicates data not available    "M" - missing observation(s)

### Station Summaries by Division: Sept 03 – Sept 09, 2025

Includes NWS Cooperative and CoCoRaHS Stations

<b>South Central Division</b>															
Stations	Avg T-Max	Avg T-Min	T-Avg (°F)	T-Avg DFN	Highest T-Max	Lowest T-Min	HDD	HDD %-N	CDD	CDD %-N	Total P (in.)	P- DFN (in.)	1-Day P-Max	P-Max Date	Rain Days
<i>Baldwin 1.8 N</i>	-	-	-	-	-	-	-	-	-	-	0.00	-	-	-	0
<i>Bayou Sorrel Lock</i>	-	-	-	-	-	-	-	-	-	-	0.00	-1.37	-	-	0
<i>Breaux Bridge 0.7 NNW</i>	-	-	-	-	-	-	-	-	-	-	0.68	-	0.68	9/4	1
<i>Carville 2 SW</i>	89.6	71.4	80.5	-0.3	92	66	0	0	111	100	0.00	-1.20	-	-	0
<i>Donaldsonville 4 SW</i>	91.0	68.1	79.6	-0.7	93	61	0	0	104	97	0.00	-1.46	-	-	0
<i>Jeanerette 5 NW</i>	88.9	67.7	78.3	-1.3	92	59	0	0	94	92	0.04	-1.69	0.04	9/6	1
<i>Lafayette LFT AP</i>	89.9	69.0	79.4	-2.3	93	60	0	0	103	88	1.09	-0.25	1.09	9/3	1
<i>Lafayette 2.9 ENE</i>	-	-	-	-	-	-	-	-	-	-	1.39	-	1.39	9/4	1
<i>New Iberia ARA AP</i>	89.6	68.3	78.9	-2.5	92	60	0	0	99	86	0.15	-1.20	0.14	9/6	2
<i>Plaquemine 2 N</i>	-	-	-	-	-	-	-	-	-	-	0.00	-1.23	-	-	0
<i>St. Gabriel 2.8 NNW</i>	-	-	-	-	-	-	-	-	-	-	0.00	-	-	-	0
<i>St. Martinville 0.2 S</i>	-	-	-	-	-	-	-	-	-	-	0.66	-1.10	0.55	9/4	2
<b>Division</b>	<b>89.8</b>	<b>68.9</b>	<b>79.3</b>	<b>-1.4</b>	<b>93</b>	<b>59</b>	<b>0</b>	<b>0</b>	<b>102</b>	<b>93</b>	<b>0.33</b>	<b>-1.08</b>	<b>1.39</b>		<b>2</b>
<b>Southeast Division</b>															
<i>Belle Chase 1.6 NNE</i>	-	-	-	-	-	-	-	-	-	-	0.00	-	-	-	0
<i>Chalmette</i>	-	-	-	-	-	-	-	-	-	-	0.00	-1.63	-	-	0
<i>Cut Off 0.8 WNW</i>	-	-	-	-	-	-	-	-	-	-	0.02	-	0.02	9/8	1
<i>Dulac 3 N</i>	-	-	-	-	-	-	-	-	-	-	0.05	-1.90	0.05	9/6	1
<i>Dutchtown #2</i>	-	-	-	-	-	-	-	-	-	-	0.00	-1.30	-	-	0
<i>Gonzales</i>	-	-	-	-	-	-	-	-	-	-	0.00	-1.33	-	-	0
<i>Houma 4.1 NNE</i>	-	-	-	-	-	-	-	-	-	-	0.00	-	-	-	0
<i>NO-Armstrong AP</i>	91.4	73.9	82.6	+0.2	93	71	0	0	125	102	0.00	-1.47	-	-	0
<i>NO-Lakefront AP</i>	90.4	76.6	83.5	+0.3	93	73	0	0	132	104	0.00	-1.30	-	-	0
<i>New Orleans 2.8 E</i>	-	-	-	-	-	-	-	-	-	-	0.00	-	-	-	0
<i>Metairie 2.8 ENE</i>	-	-	-	-	-	-	-	-	-	-	0.00	-	-	-	0
<i>Raceland 2.1 WSW</i>	-	-	-	-	-	-	-	-	-	-	0.00	-	-	-	0
<i>St. Amant 3.3 N</i>	-	-	-	-	-	-	-	-	-	-	0.00	-	-	-	0
<i>St. Rose 0.3 W</i>	-	-	-	-	-	-	-	-	-	-	0.00	-	-	-	0
<i>Thibodaux 4 SE</i>	89.4	68.7	79.1	-2.7	92	64	0	0	100	85	0.00	-1.58	-	-	0
<i>Westwego 2.4 ENE</i>	-	-	-	-	-	-	-	-	-	-	0.00	-	-	-	0
<b>Division</b>	<b>90.4</b>	<b>73.1</b>	<b>81.7</b>	<b>-0.8</b>	<b>93</b>	<b>64</b>	<b>0</b>	<b>0</b>	<b>119</b>	<b>97</b>	<b>0.00</b>	<b>-1.51</b>	<b>0.05</b>		<b>1</b>

\* T - Temperature (°F)    DFN - Departure from Normal    P - Precipitation (in.)    "-" indicates data not available    "M" - missing observation(s)



#### **BURN BANS issued for TANGIPAHOA and ST. HELENA Parishes**

Tangipahoa Parish issued a parishwide burn ban on Friday, September 12th due to “dry conditions ... resulting in dangerous fire conditions.” St. Helena followed suit with a burn ban on the following day, noting dry conditions across the parish and a shortage of available firefighters.

The bans prohibit all forms of outdoor burning, including fire pits, bonfires, and the burning of trash and yard debris. Both burn bans are in effect until further notice.